



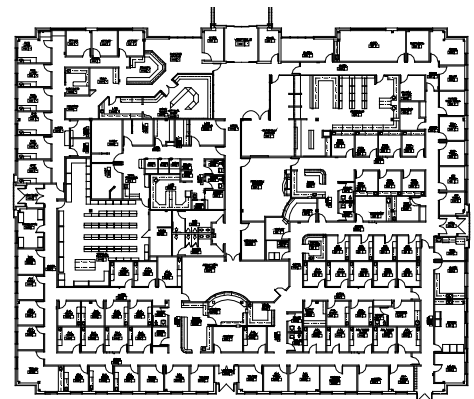
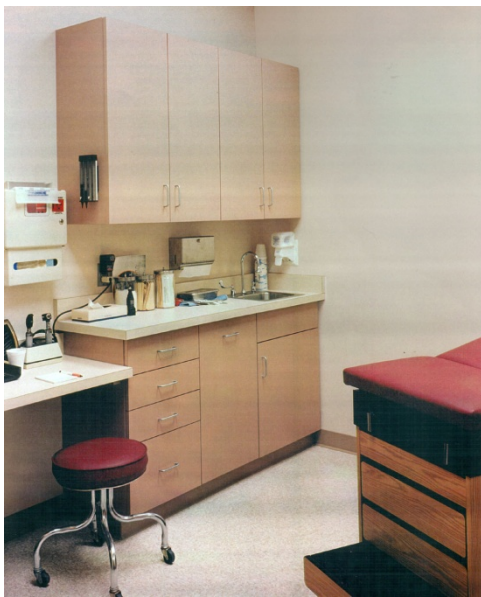
Project Name: **Humana Englewood**

Project type: **Medical Tenant Finish**

Address: **101 NW Englewood
Gladstone, Missouri**

Description: **The Humana Englewood Medical Center is a 20,000 sf facility designed with multiple departments including, Pharmacy, Eye Care, Administration, Pediatrics, Adult Medicine, Lab and X-ray, Medical Records and Adult Medicine.**

The facility is designed to for department adjacencies that allow for ease of patient movement within the facility while also providing the ability to secure departments from adjacent areas depending on individual department times of operation.



Note: This project was designed by Tim Wilson as an architect in the employ of the firm of record, WRS Architects, Inc.